

SOLUTIONS SUPPORTING WASTE MANAGEMENT



Frontloader solutions for garbage trucks



**ARUBAMU, Foto video
organizer**



**RFID Manual
identification system**



Video monitoring



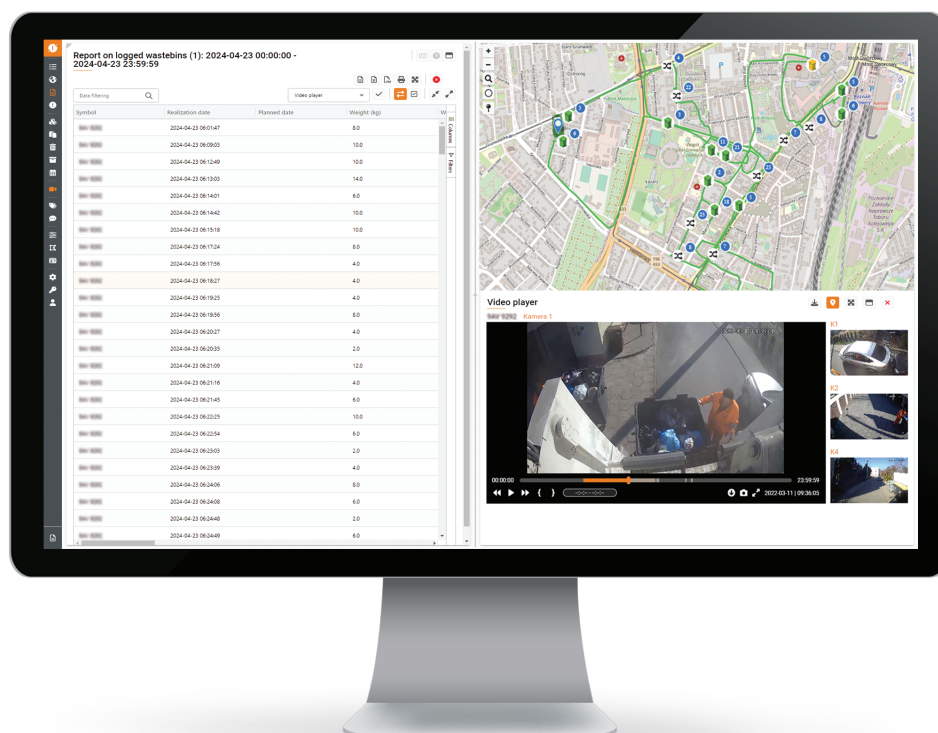
**Communication
system with the driver**



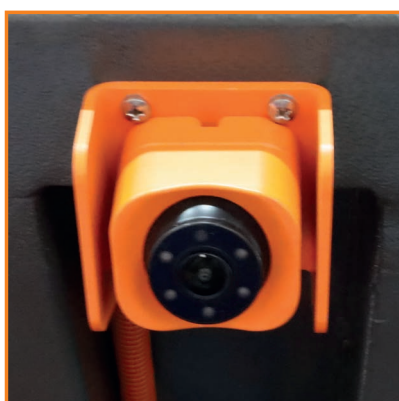
**RFID Automatic
identification system**



**Dynamic waste weighing
system**



ARUBAMU is part of the ICHI system, a proprietary software for managing waste collection processes. The module enables documentation of tasks performing in video form, which is useful when irregularities are detected or complaints are verified. It allows to search for specific events from the recording according to specified parameters, generating reports, playing the video material and download all or part of the recording.



Example of cameras used



ADVANTAGES OF THE ARUBAMU:

- synchronisation of reports, maps with video recordings;
- anonymisation of objects in video recordings;
- user-friendly interface;
- fast report generation;
- integrated with other ICHI modules;
- accurate analysis of specific events (loading, unloading; traffic incidents);
- facilitation of service provision.

■ PHOTOBIX

This is the new generation of image recording - the Photobox is a digital recorder that saves images from cameras installed in the vehicle along with location data on data storage.

Photobox ■



BASIC FEATURES OF THE PHOTOBIX:

- image recording in the form of photos or videos;
- configurable quality, resolution and frame rate;
- automatic transmission of recorded images.



■ Example of cameras used

PHOTOBIX 360°

Digital video recorder working with ICHI software to recording on a data storage.

Photobox 360° ■



EFFICIENCY IN YOUR HANDS

RFID AUTOMATIC IDENTIFICATION SYSTEM

The **RFID AUTOMATIC IDENTIFICATION** - system enables reading and identification of bins and then send the data to the system. The system can be installed in any waste collection vehicle. Bins are identified thanks to RFID antennas and readers mounted on the vehicles and RFID transponders installed in the bins.



■ Example of RFID antenna installation for Frontloader vehicles



■ RFID transponders



■ Examples of installation locations for RFID transponders on containers

EXCLUDES DOUBT AND GIVES CONTROL

RFID MANUAL IDENTIFICATION SYSTEM

EXCLUDES DOUBT AND GIVES CONTROL

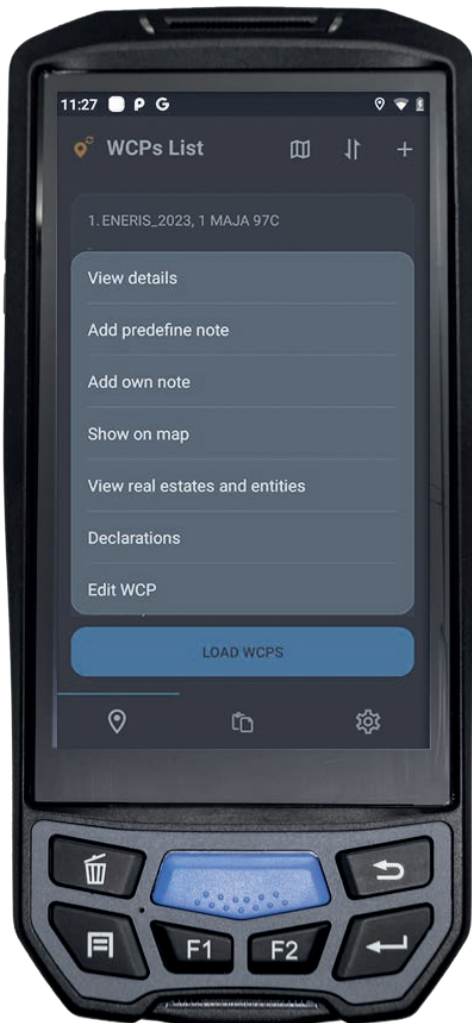
MANUAL RFID IDENTIFICATION is a modern approach to bin and container management. In addition to RFID reading, our handheld readers allow the use of other identification technologies such as barcodes and QR codes.



Check USB



COODY 1.0

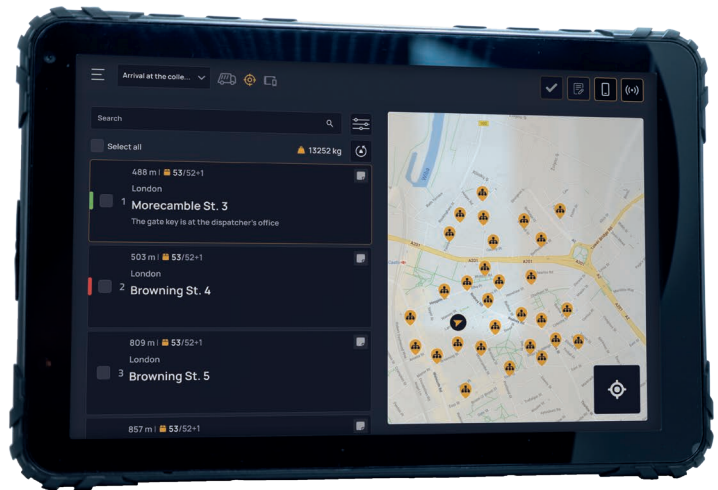


RFID data collector

GOOD COMMUNICATION IS THE BASIS FOR EFFECTIVE WORK

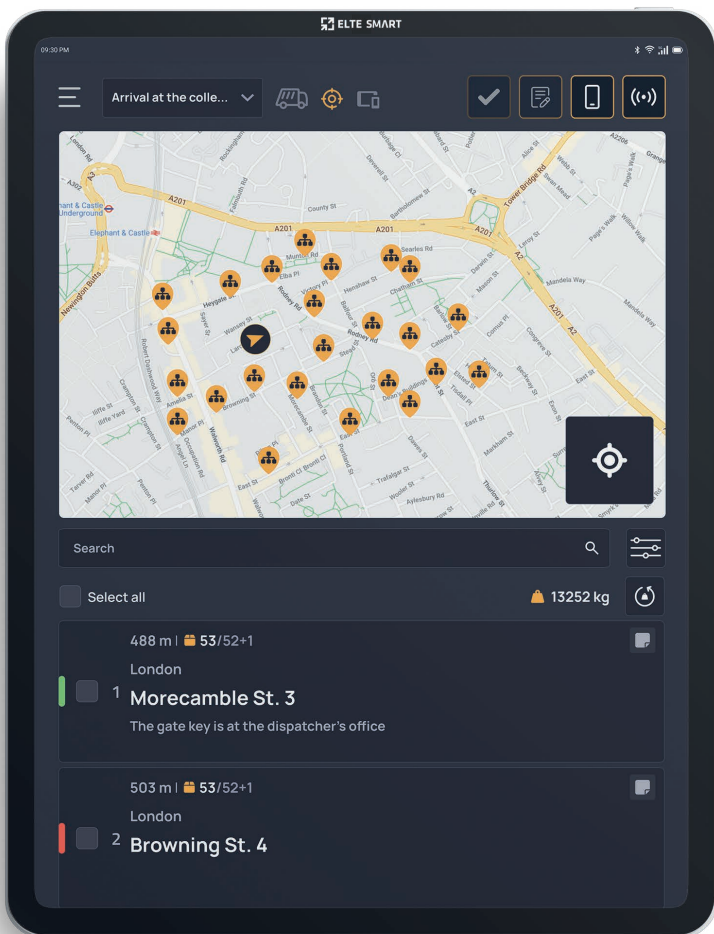
■ DRIVER COMMUNICATION SYSTEM

The terminal has many functionalities, including the ability to communicate with the driver, GPS navigation, diagnostics of GPS system components. It also allows the receipt and execution of a sent task list. If irregularities occur during execution, the vehicle operator can report them using predefined or customised notes, to which photos can be attached as attachments.



■ Terminal 8"

■ Terminal 13"



■ List of collection points with visualisation on the map

Peripheral equipment



■ Printer



■ RFID data collector

EVERY KILOGRAM MATTERS

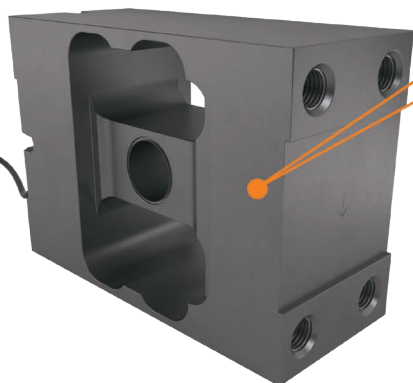
■ DYNAMIC WASTE WEIGHING SYSTEM

The dynamic waste weighing system is a fully automated system where the weight is determined without stopping the waste bin lifter during collection - measured while the bins are being emptied.

Installation of a dynamic weighing system for containers on a Frontlader vehicle ■



Example of load cell used ■



List of weighing results			
L.P.	Weighing time	Loader side	Weight [kg]
1	07:37:58	1	86.0
2	07:38:03	2	45.0
3	07:39:41	1	101.0
4	07:40:32	1	72.0
5	07:41:00	2	97.0

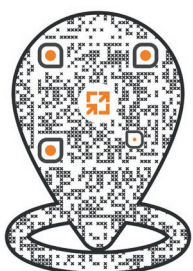
Erase weighing memory

Assign weight

Cancel



Visit us !



Check out our other offers

Download!

